



GENERAL

YARD NUMBER	571626 (Damen Shipyards Hardinxveld)
DELIVERY DATE	January 2011
BASIC FUNCTIONS	Anchor handling, dredger service, supply, towing, hose handling and survey
CLASSIFICATION	Bureau Veritas I_Tug Unrestricted navigation •
NAT. AUTHORITIES	MACH, AUT-UMS Marine Coastguard Agency workboat Class 1
FLAG	United Kingdom

DIMENSIONS

LENGTH O.A.	26.00 m
BEAM O.A.	11.50 m
DEPTH AT SIDES	3.50 m
DRAUGHT	± 2.35 m
DISPLACEMENT	515 ton(m)

TANK CAPACITIES

FUEL OIL	118.0 m ³
BLACK/GREY WATER	9.2 m ³
FRESH WATER	47.0 m ³
DIRTY OIL	1.7 m ³
HYDR OIL	1.2 m ³
LUB OIL / BILGE WATER EACH	1.8 m ³
BALLAST WATER	58.3 m ³

PERFORMANCES

BOLLARD PULL	31.0 ton(m)
SPEED	10.5 knots

PROPULSION SYSTEM

MAIN ENGINES	3x Caterpillar 3412D TTA
TOTAL POWER	1791 bkW at 1800 rpm
GEARBOXES	3x Reintjes WAF 464 5.591 : 1
PROPULSION	3x Promarin fixed pitch propellers in Optima nozzles, 1700 mm
BOWTHRUSTER	Hydraulically driven 200 kW, 360°

AUXILIARY EQUIPMENT

GENERATOR SETS	2x Cat. C 04.4, 107,5 kVA each
HYDRAULIC POWER	Caterpillar C18 TA, 357 kW 1800rpm
FUEL OIL SEPERATOR	Alfa Laval MIB 303

DECK LAY-OUT

ANCHOR	225 kg Pool TW (HHP)
ANCHOR WINCH	Ridderinkhof, hydraulically driven
DECK CRANE	1x Heila HLRM 200-4SL 1x Heila HLRM 240-2S Ridderinkhof, double drum in waterfall execution
ANCHOR HANDLING / TOWING WINCH CAPACITY	50 ton at 10 m/min pulling force (1 st layer)
layer)	90 ton brake holding force (1 st layer) 100 ton at 5 m/min pulling force (1 st layer)
layer)	150 ton brake holding force (1 st layer)
TOWING HOOK	Mampaey
TUGGER WINCHES	Argano S100
CAPSTANS	WK Hydraulics, 5 ton at 30 m/min

ACCOMMODATION

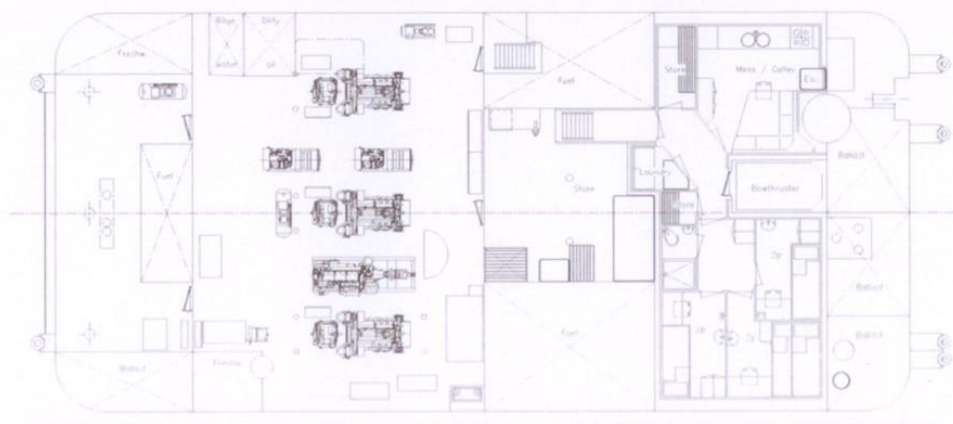
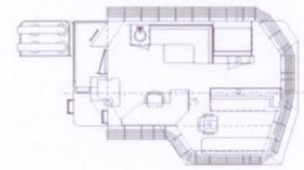
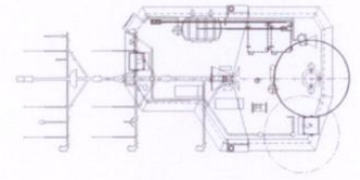
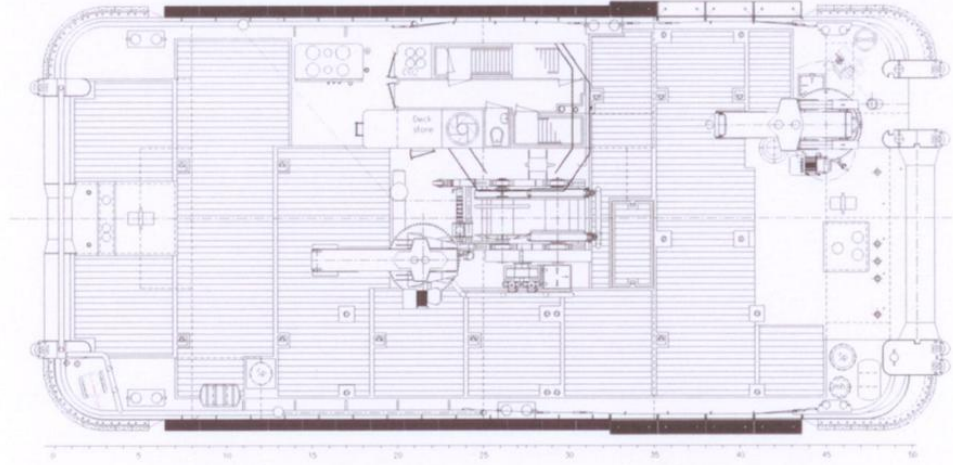
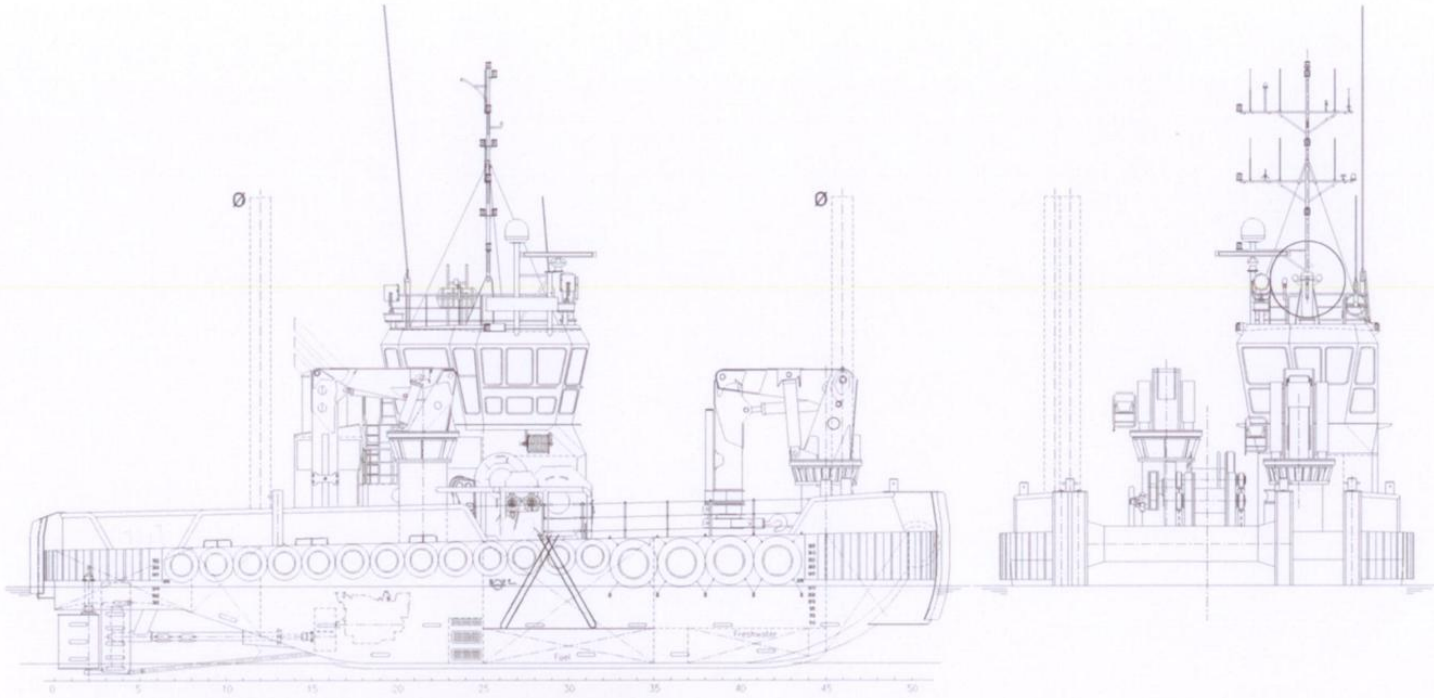
Comfortable heated and air-conditioned accommodation for 6 persons in 3 cabins, galley, sanitary facilities, etc.

NAUTICAL AND COMMUNICATION EQUIPMENT

RADAR SYSTEM	1x Furuno FAR 2117
COMPASS	1x Cassens & Plat, Reflecta 1
GYRO COMPASS	1x Tokimec ES- 160
ECHO SOUNDER	1x Furuno FE-700
GPS	1x Furuno GP-150 D
AUTOPILOT	1x Sea pilot 75
VHF	3x Sailor RT5022 / DSC
HANDHELD VHF	2x TR-20
SEARCHLIGHTS	2x Pesch 1000 W
SSB	1x Furuno FS-1570
INMARSAT C	1x Sailor H-2095 C



Crew Transfer
 Commercial charter for offshore research
 Offshore servicing & providing services
 Hydrographic surveys
 High speed response
 Diving support
 ROV & drop camera
 Environmental sensitive reef area & near shore surveys
 Amphibious marine crafts – multirole, all terrain, launch & land
 Our skipper & crew are all highly skilled, duly qualified & are constantly kept up to date with OH&S



Equipment marked with this sign Ø are optional